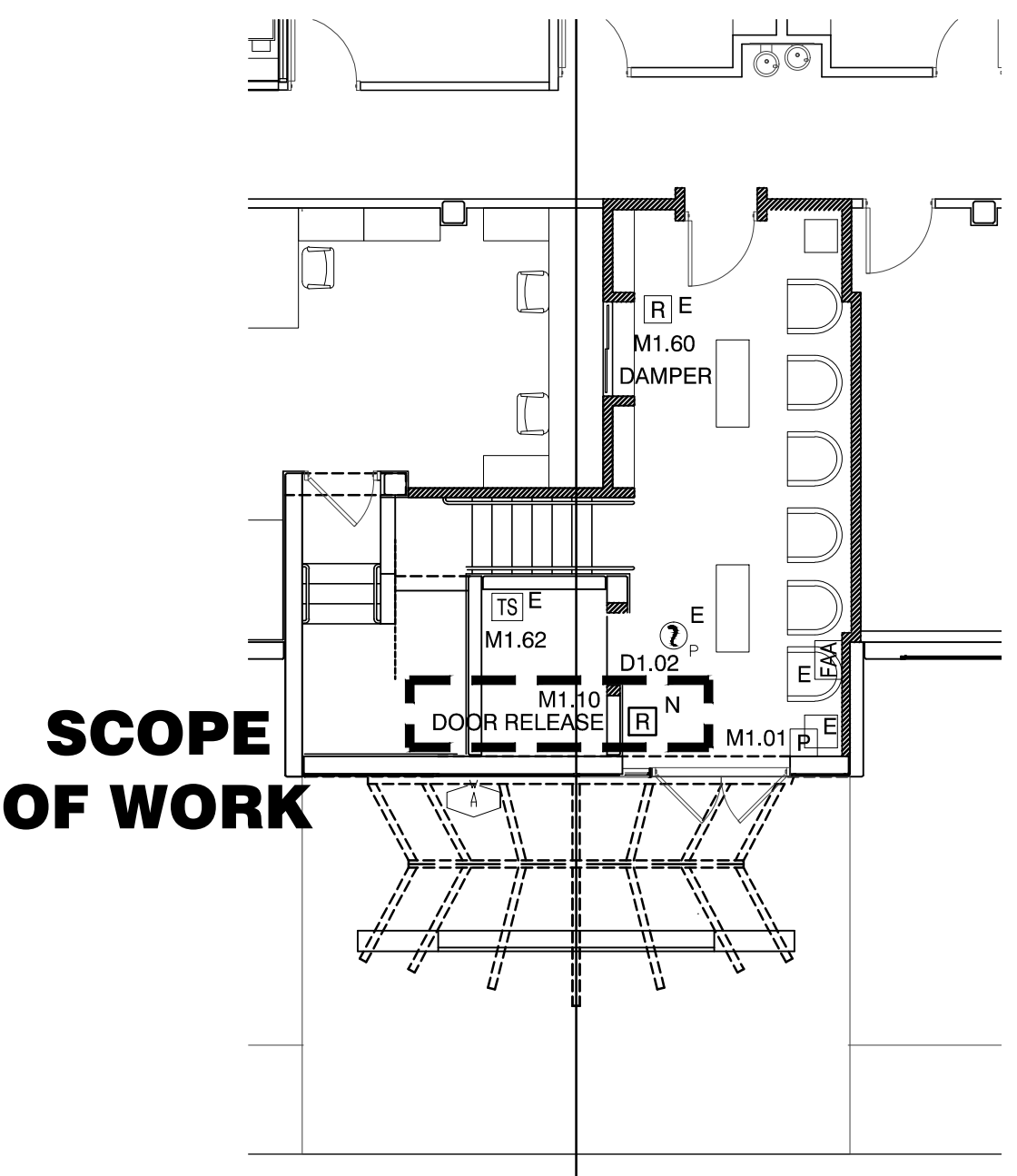


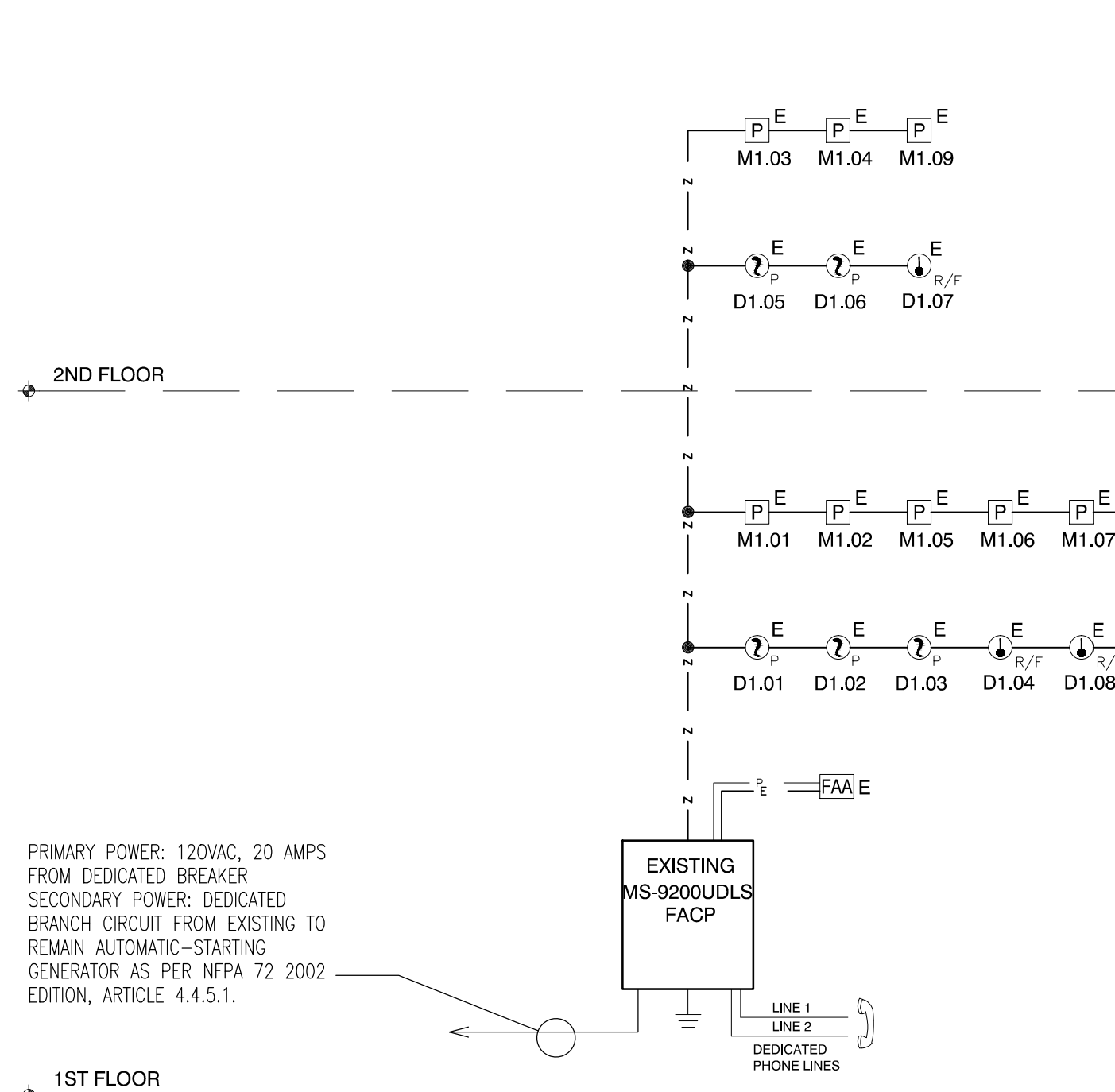
### 1 LOCATION MAP

SCALE: NTS



### 2 AREA OF WORK- FIRE ALARM PLAN

SCALE: 1/8"=1'



### 5 RISER DIAGRAM

SCALE: NTS

PRIMARY POWER: 120VAC, 20 AMPS FROM DEDICATED BREAKER  
SECONDARY POWER: DEDICATED BRANCH CIRCUIT FROM EXISTING TO REMAIN AUTOMATIC-STARTING GENERATOR AS PER NFPA 72 2002 EDITION, ARTICLE 4.4.5.1.

BUILDING SPECIFICATIONS											
PROJECT NAME	BUILDING	OCCUPANCY	FIRE ALARM SYSTEM	MONITORED OFF-SITE	NOT MONITORED OFF-SITE	METHOD OF COMMUNICATION TO THE MONITORING STATION	FIRE DETECTION SYSTEM	COMMENT			
CHAUVET OFFICES	NEW	SCHOOL	POWER LIMITED	CENTRAL STATION F.A. SYSTEM	PROPRIETARY SUPERVISING STATION F.A. SYSTEM	LOCAL F.A. SYSTEM	FACT - TWO TELEPH. LINES AND A RADIO TRANSMITTER	ELEVATOR RECALL F.A. SYSTEM	VOICE	FIRE FIGHTER PHONES	BUILDING IS SPRINKLED

SYSTEM INPUTS	SYSTEM OUTPUTS												
	A	B	C	D	E	F	G	H	I	J	K	L	M
1. MANUAL PULL STATIONS													
2. SMOKE DETECTORS													
3. 1ST FL. ELEV. LOBBY SMOKE DETECTOR													
4. HEAT DETECTORS													
5. FLOW SWITCHES													
6. FIRE PUMP RUNNING													
7. NOTIFICATION APPLIANCE SHORT CIRCUIT													
8. NOTIFICATION APPLIANCE OPEN CIRCUIT													
9. SLC OPEN CIRCUIT													
10. SLC SHORT CIRCUIT													
11. FIRE ALARM AC POWER FAILURE													
12. FIRE ALARM SYSTEM LOW BATTERY													
13. SIGNAL BOOSTER OPEN CIRCUIT													
14. SIGNAL BOOSTER GROUND FAULT													
15. TAMPER SWITCH													
16. FIRE PUMP POWER FAILURE													
17. FIRE PUMP PHASE REVERSAL													
18. DUCT SMOKE DETECTORS													

### 3 SEQUENCE OF OPERATION

SCALE: NTS

Secondary Power Source Requirements									
Device Type	Qty	Current Draw	Total	Qty	Current Draw	Total			
Main Circuit Board	1	0.145000	0.145000	1	0.275000	0.275000			
LD-80F	1	0.025000	0.025000						
SD355	5	0.003000	0.001500						
SD355T	0	0.003000							
AD355	0	0.003000							
H355	3	0.003000	0.000900						
H355R	0	0.003000							
H355HT	0	0.003000							
D350P	0	0.003000							
D350RP	0	0.003000							
D350PL	0	0.003000							
D350RPL	2	0.003000	0.000600						
D355PL	0	0.003000							
MMF-300	0	0.004000							
MMF-300-10	0	0.003500							
MDF-300	0	0.007500							
MMF-301	18	0.000375	0.006750						
MMF-302	0	0.002000							
MMF-302-6	0	0.002700							
BG-12LX	9	0.000230	0.002070						
CMF-300	0	0.000390							
CMF-300-6	0	0.002250							
CRF-300	8	0.000270	0.002160						

Maximum alarm draw for all Addressable devices -----> 0.400000

Total Standby Load	0.183980	Total Alarm Load	0.739000
--------------------	----------	------------------	----------

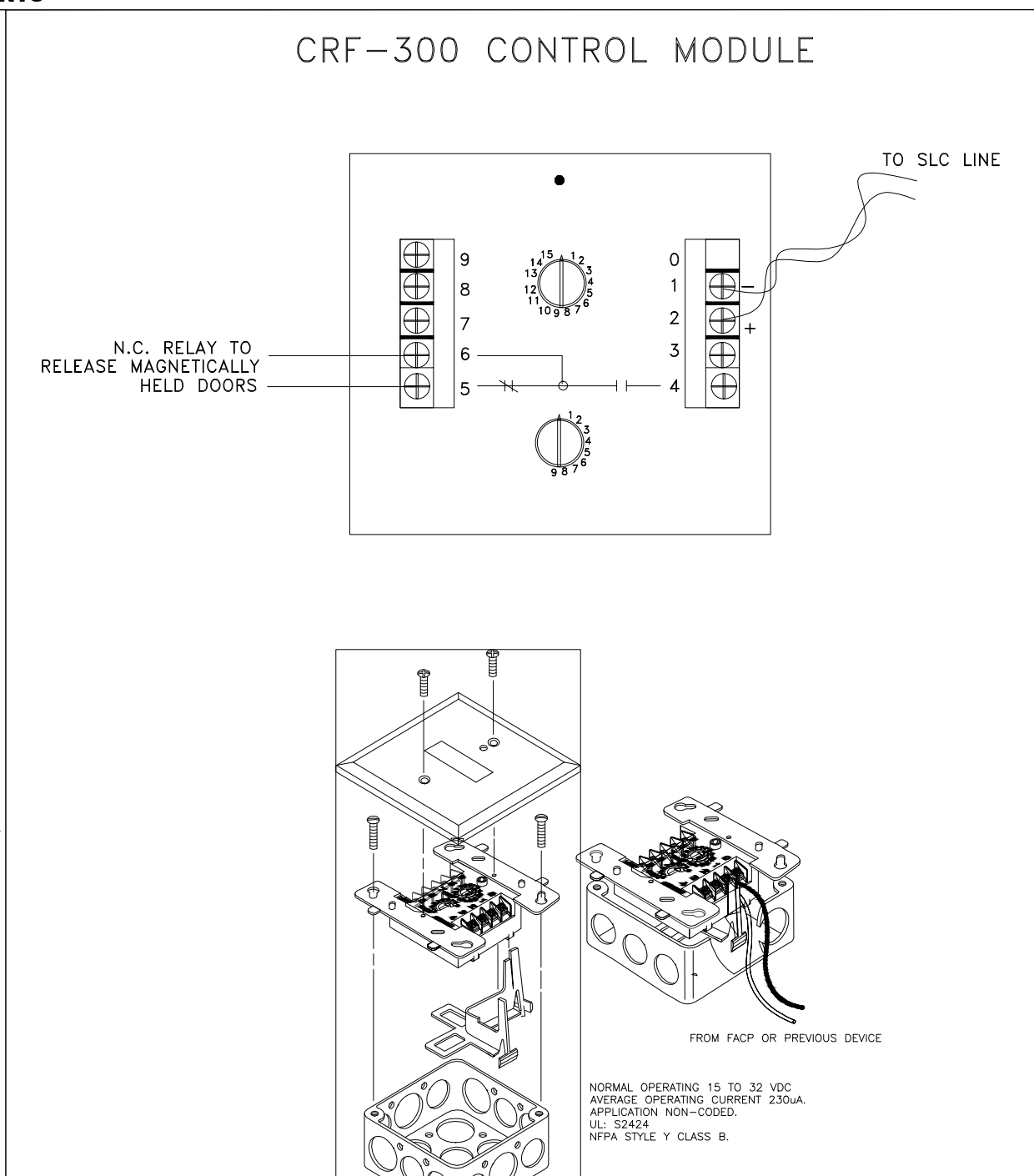
Calculation in Total Sheet

Standby Load Current	0.18398 Amps	Required Standby Time in Hours	24 Hours	=	4.416 AH
Alarm Load Current (Amps)	0.73900 Amps	Required Alarm Time in Minutes	5 Minutes	=	0.622 AH
		Total Current Load	1.2	=	4.478 AH
		Multiply by the Derating Factor	x 1.20	=	5.37 AH

Recommended Batteries: **BAT-1270 - 7AH Batteries**

### 3 FACP BATTERY CALCULATIONS

SCALE: NTS



### 5 RELAY DETAILS

SCALE: NTS

### SYMBOL LEGEND

SYMBOL	QTY	DESCRIPTION
FAAE	EX	FIRE LITE MS-9200UDLS FIRE ALARM CONTROL PANEL - EXISTING
FAA	EX	FIRE LITE ANNUNCIATOR - EXISTING
P	EX	FIRE LITE BG-12LX MANUAL PULL STATION - EXISTING
E	EX	FIRE LITE SD355 ADDRESSABLE PHOTOELECTRIC DETECTOR - EXISTING
R/F	EX	FIRE LITE H355 HEAT DETECTOR - EXISTING
R	1	FIRE-LITE RELAY MODULE CRF-300
E		DENOTES EXISTING TO REMAIN DEVICES
R		DENOTES DEVICES BEING RELOCATED AS SHOWN ON LOCATIONS
N		DENOTES NEW DEVICES BEING ADDED IN NEW LOCATIONS

### LINETYPE LEGEND

LINE TYPE	LETTER	DESCRIPTION
— Z —	Z	SIGNALING LINE CIRCUIT (SLC)
— P —	P	24VDC POWER

### WIRE LEGEND

TYPE	DESCRIPTION	SIZE	# OF CONDUCTORS	NOTES
Z	3/4 AWG FPL, FPLP, THHN UNSHIELDED	16 AWG	2	SLC CKT
P	3/4 AWG FPL, FPLP, THHN UNSHIELDED	14 AWG	2	24V POWER
G	THHN *	14 AWG	1	GROUND

\* ALL WIRING INSTALLATION SHALL BE IN COMPLIANCE WITH NFPA 72, LIFE SAFETY CODE 101, & N.E.C. (CURRENT EDITIONS)

\* CONNECTIONS AT DEVICES SHALL BE AS INDICATED ON INSTALLATION DOCUMENTS & AS FURNISHED WITH EQUIPMENT &/OR DEVICES.

\* ALL FIRE ALARM WIRING SHALL BE POWER LIMITED

\* CABLE SIZE SHALL COMPLY WITH N.E.C. ARTICLE 760.71

### SCOPE OF WORK

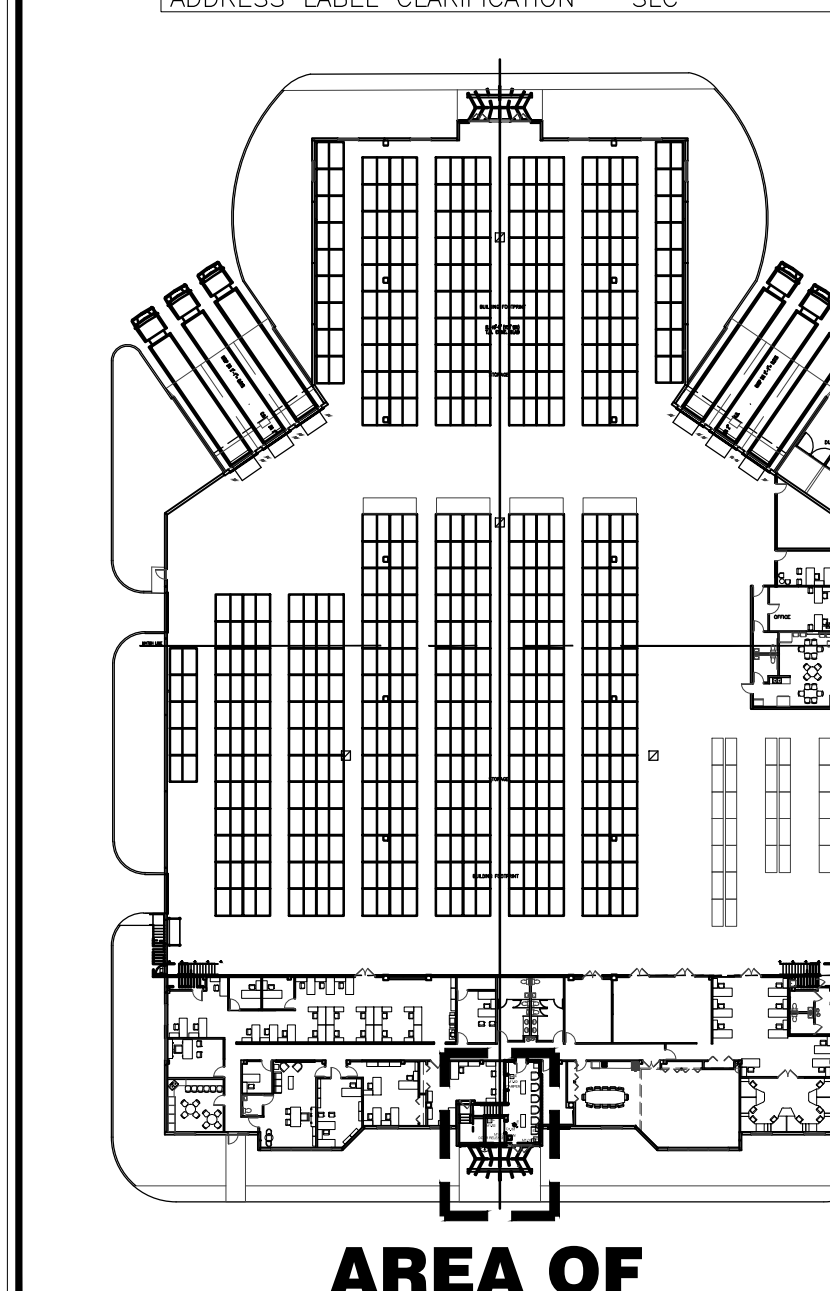
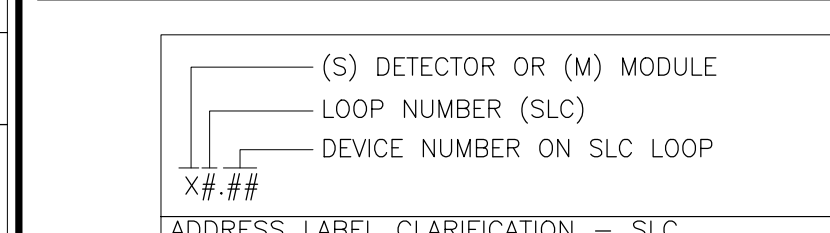
Bass United Fire and Security, Inc. (we, us, our) will furnish and install a new relay for door release to an existing Fire Alarm system on an existing office and warehouse building, as shown herein in order to provide appropriate minimum requirements for performance, selection, use, and location of detection and notification devices to ensure timely warning for the purposes of life safety and protection.

Our scope of work includes installation, parts, materials, programming, testing, and certification of the system consisting of:

- FireLite relay module

All the work will be done in compliance with:

- FFPC - 2010 ed.
- NFPA 101 - 2009 ed.
- NFPA 72 - 2002 ed.
- NFPA 70/NEC - 2005 ed.
- FFBC - 2007 ed.
- ALL LOCAL PREVAILING CODES



### AREA OF WORK

SCALE: NTS

### KEY PLAN

**BASS UNITED FIRE & SECURITY SYSTEMS, INC.**  
1480 SW 3rd STREET, SUITE 9  
POMPAHO BEACH, FL 33069  
TOLL FREE: 1-800-372-2770  
TEL: 904-762-7804  
FAX: 904-762-7804  
www.bassunited.com

REVISIONS:

NO.	DATE	BY	DESCRIPTION
0	03-29-12	BAH	ORIGINAL SUBMITTAL
1	05-10-12	BAH	FIRE DEPARTMENT COMMENTS
2	05-29-12	BAH	FIRE DEPARTMENT COMMENTS
3	06-12-12	BAH	FIRE DEPARTMENT COMMENTS

DRAWN BY: BAH  
CHECKED BY: BAH  
DATE: 03-29-12  
SCALE: AS NOTED

REVISIONS PREPARED FOR:

BASS UNITED  
5200 NW 108TH AVENUE  
SUNRISE, FLORIDA 33351  
FL LIC # : ET 000084

PROJECT NAME: CHAUVET OFFICE  
PROJECT NUMBER: 9415  
SHEET NO.: FA-01  
1 OF 1