

## Description

### ILI-MB-E3

The Intelligent Loop Interface-Main Board (ILI-MB-E3) is the main interface for the E3 Series® product line. With its state-of-the-art 32 bit RISC processor, this compact “panel on a board” provides a powerful addition to Gamewell-FCI’s single pair conductor solutions. This intuitive design provides two (2), signaling line circuits, two (2), notification application circuits, local energy city box output, auxiliary relay functions, and auxiliary power output. These features, combined with built-in network and serial protocols, allow this module to support a host of new and existing products, resulting in a building block approach to fire alarm panel design.

The ILI-MB-E3 is network ready and occupies one of 64 nodes, operating at 625K baud. When this sub-assembly is integrated with proven Broadband components, the result is a flexible yet powerful integrated audio solution. When transmitting to remote locations, the optional RPT-E3 provides the ILI-MB-E3 with valuable signal boosting and transient protection, as well as connectivity using both wire and fiber-optic cables.

The ILI-MB-E3 provides two (2), signaling line circuits and terminals for the connections to up to 159 detectors and 159 modules per SLC in Velociti®. In clip mode, each SLC supports 99 detectors and 98 modules. The RS-485 interface can support up to a total of sixteen (16), ASM-16 and/or sixteen (16), ANU-48 remote LED driver modules.

The ILI-MB-E3 relay outputs include system alarm, supervisory, and system trouble contacts. The ILI-MB-E3 provides output for a local energy city master box or remote location which is non power-limited. All other wiring is power-limited.

E3 Series,® NetSOLO,® and Velociti® are registered trademarks of Honeywell International Inc.

## Intelligent Loop Interface-Main Board



ILI-MB-E3

## Features

### ILI-MB-E3 and ILI-S-E3:

- Listed under UL Standard 864, 9th Edition
- Network ready integral 625K baud ARCNET
- 115.2K baud RS-232
- Signaling line circuits with:
  - Two (2), Class A, Style 6, 7\* or Class B, Style 4 circuits
  - 40 Character user-defined text per device
  - Capacity of 159 sensors and 159 addressable modules per circuit
- 4100 event history log

\*Style 7 wiring requires the use of System Sensor M500X Isolator Modules.

### ILI-MB-E3 Only:

- Two (2), notification appliance circuits, Class “A”, Style Z or Class B, Style Y rated at 2.0 amps. per circuit
- RS-485 supporting sixteen (16), ASM-16 switch modules and/or ANU-48 LED driver modules
- Alarm, trouble, and supervisory dry contacts Form “C”, rated at 2 amp. @ 30 VDC (resistive)
- Supports six (6), local/remote LCD-E3 annunciators and five (5), LCD-7100 annunciators

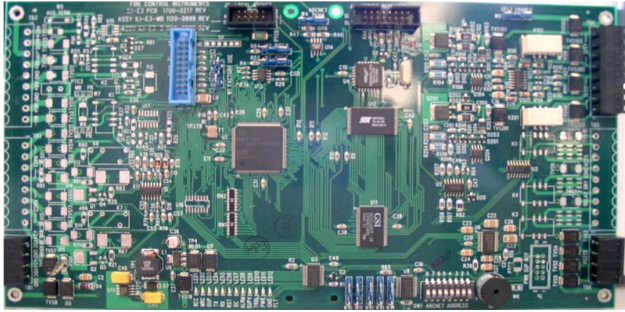
### An ISO 9000-2000 Company



### GAMEWELL-FCI

12 Clintonville Road, Northford, CT 06472-1610 USA • Tel: (203) 484-7161 • Fax: (203) 484-7118

Specifications are for information only, are not intended for installation purposes, and are subject to change without notice. No responsibility is assumed by Gamewell-FCI for their use.



ILI-S-E3

### ILI-S-E3

The Intelligent Loop Interface - Expansion Board (ILI-S-E3) provides the E3 Series control panel with two (2), additional signaling line circuits. The layout is similar to the ILI-MB-E3 except a number of components are omitted. The ILI-S-E3 occupies one node on the Broadband network. The ILI-S-E3 provides two (2), signaling line circuits and terminals for the connections to up to 159 detectors and 159 modules per SLC in Velociti mode. In clip mode, each SLC supports 99 detectors and 98 modules.

## Installation

Typically, the ILI-MB-E3 or ILI-S-E3 can be mounted in the following E3 Series cabinets:

- Cabinet B and D, backbox
- Cabinet C, INX-E3 sub-assembly plate
- Cabinet C, INCC-E3 sub-assembly plate
- Cabinet D, E3-INX-D Plate
- Cabinet D, E3-ILI-D Plate

For instructions on installing the ILI-MB-E3 or ILI-S-E3/ ILI95-S-E3, refer to the E3 Series® Expandable Emergency Evacuation Installation/Operation Manual, Part Number: 9000-0574, the ILI-MB-E3 Installation Instructions, Part Number: 9000-0579, the ILI-S-E3 Installation Instructions, Part Number: 9000-0569.

## Specifications

**Operating Voltage:** 24 VDC FWR  
(from PM-9 Power Supply)  
**Operating Current:** 0.081 amp.  
**Alarm Current:** 0.150 amp max.  
**Operating Temperature:** 32° to 120° F (0° to 49° C)  
**Relative Humidity:** 0 to 93%, non-condensing  
at 90° F (32° C)  
SLC 40 Ohms maximum line impedance.-  
0.5 µf maximum line capacitance.

## Ordering Information

### Model Description

**ILI-MB-E3** Intelligent Loop Interface-Main Board  
**ILI-S-E3** Intelligent Loop Interface-Expansion Board