



by Honeywell

7100 Series LDM-7100

Description

The LDM-7100 LED Driver Module is used in conjunction with the Gamewell-FCI 7100 Series Fire Alarm Control Panel and provides output for five (5), remote panel switches and thirty-three (33), remote LEDs, contributing to the versatility and flexibility of the 7100 Series System.

Remote output is provided for Signal Silence, Alarm Acknowledge, Trouble Acknowledge, Drill and System Reset/LED Test switches.

Output is also provided for Alarm, Supervisory, System Trouble, Power Fault, System Silenced, NAC #1 Silenced and NAC#2 Silenced LEDs.

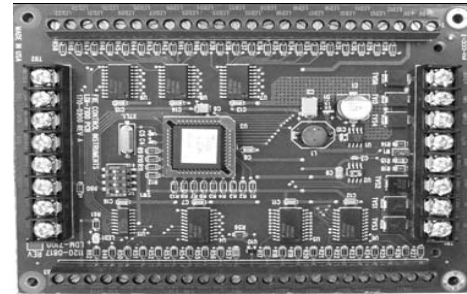
Installation

The LDM-7100 LED Driver Module is intended for mounting inside a UL Listed remote annunciator enclosure. It may be mounted by means of mounting screws or stacked using a metal hex standoff kit. Wire routing and installation methods must be in accordance with the Annunciator Installation Instructions.

Specifications

Operating Voltage:	24 VDC resettable
Supervisory Current:	.035 amp.
Alarm Current: (all LEDs lit)	.200 amp. max (All LEDs and optional sounder energizer).
UL Listed Temperature Range:	32° to 120° F (0° to 49° C)
Relative Humidity:	85% max., non-condensing at 90° F (32° C)

LED Driver Module



LDM-7100

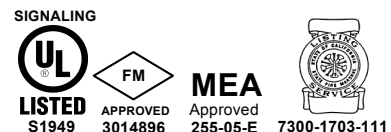
Features

- 7100 control panel accommodates up to fifteen (15), LDM-7100 modules
- UL Listed for use inside any Listed LED annunciator
- Maximum of three (3), modules per annunciator with an output of ninety-nine (99), LEDs
- May be located up to 1,219 m (4,000 feet) from the 7100 series control panel
- Factory Mutual Approved for -40° F operation

Ordering Information

Model	Description
LDM-7100	Remote LED Driver Module

An ISO 9000-2000 Company



E3 Series® is a registered trademark of Honeywell International Inc.

GAMEWELL-FCI

12 Clintonville Road, Northford, CT 06472-1610 USA • Tel: (203) 484-7161 • Fax: (203) 484-7118

Specifications are for information only, are not intended for installation purposes, and are subject to change without notice. No responsibility is assumed by Gamewell-FCI for their use.

©2009 by Honeywell International Inc. All rights reserved.

www.gamewell-fci.com

9020-0519 Rev. E page 1 of 1